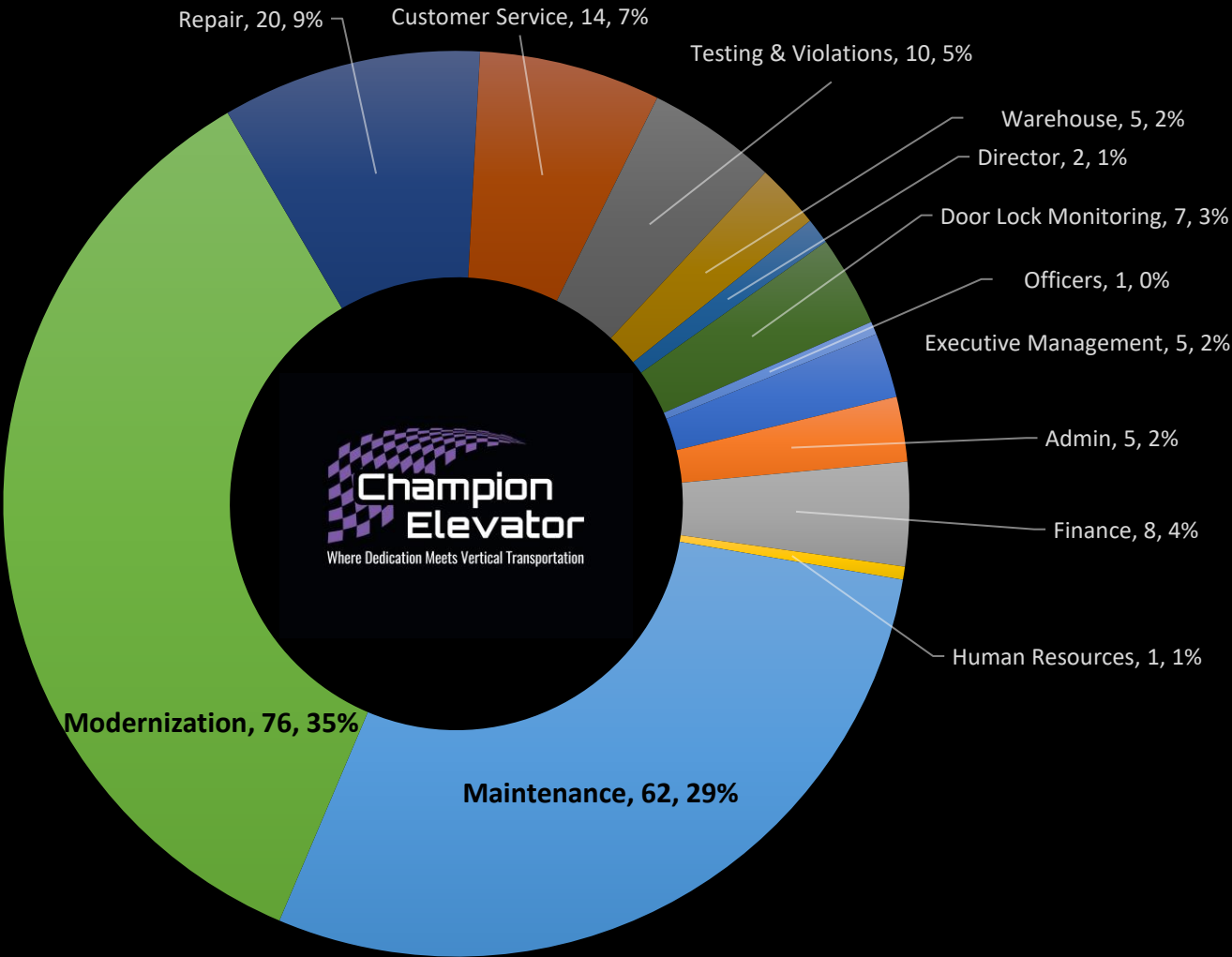


FEBRUARY 2021 CHAMPION ELEVATOR 216 EMPLOYEES AT YOUR SERVICE!



- | | | | | |
|----------------------|----------------------|------------------|----------------------|-------------|
| Executive Management | Admin | Finance | Human Resources | Maintenance |
| Modernization | Repair | Customer Service | Testing & Violations | Warehouse |
| Director | Door Lock Monitoring | Officers | | |