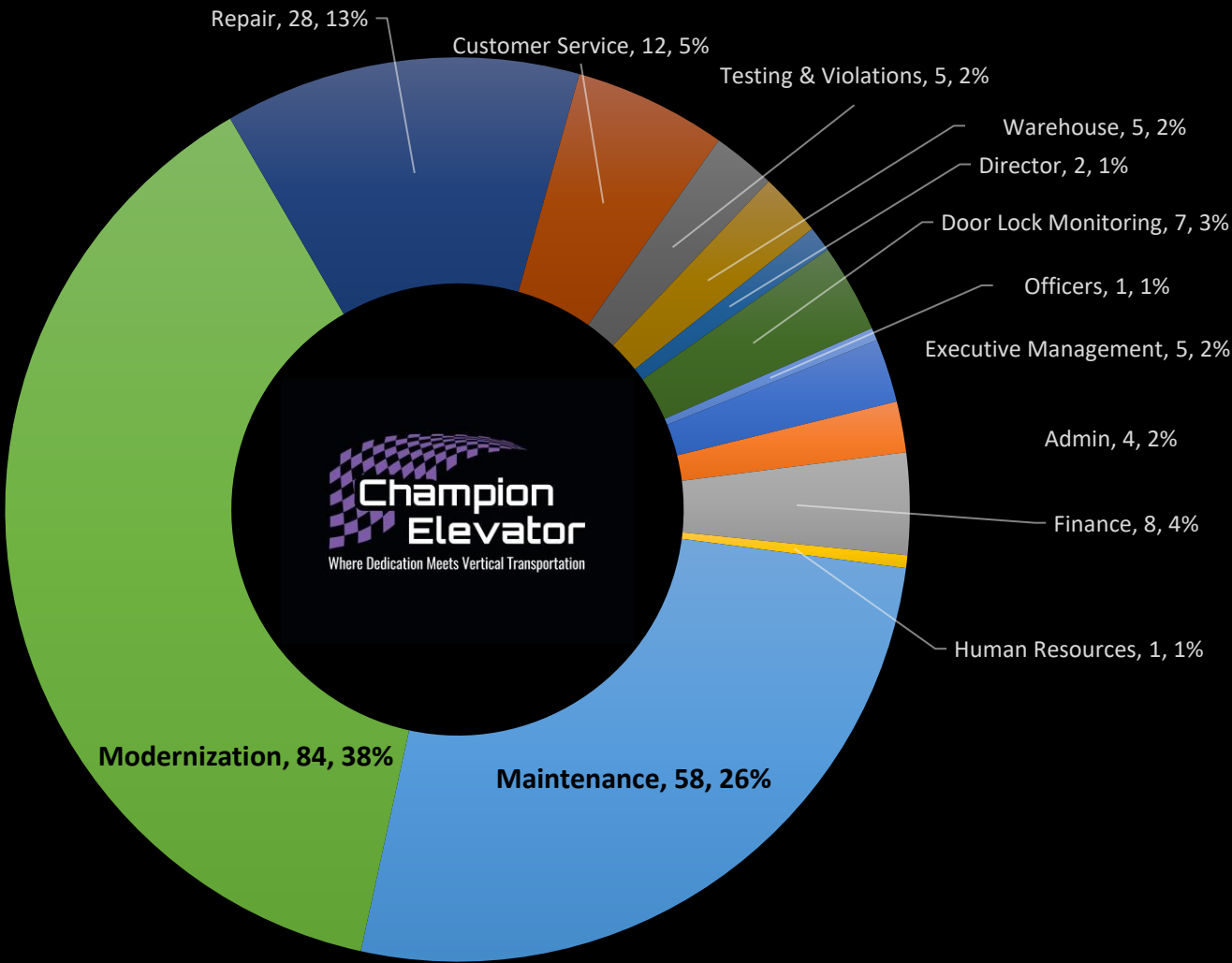


**MARCH 2021 CHAMPION ELEVATOR 220 EMPLOYEES AT YOUR SERVICE!**



- |                      |                      |                  |                      |             |
|----------------------|----------------------|------------------|----------------------|-------------|
| Executive Management | Admin                | Finance          | Human Resources      | Maintenance |
| Modernization        | Repair               | Customer Service | Testing & Violations | Warehouse   |
| Director             | Door Lock Monitoring | Officers         |                      |             |