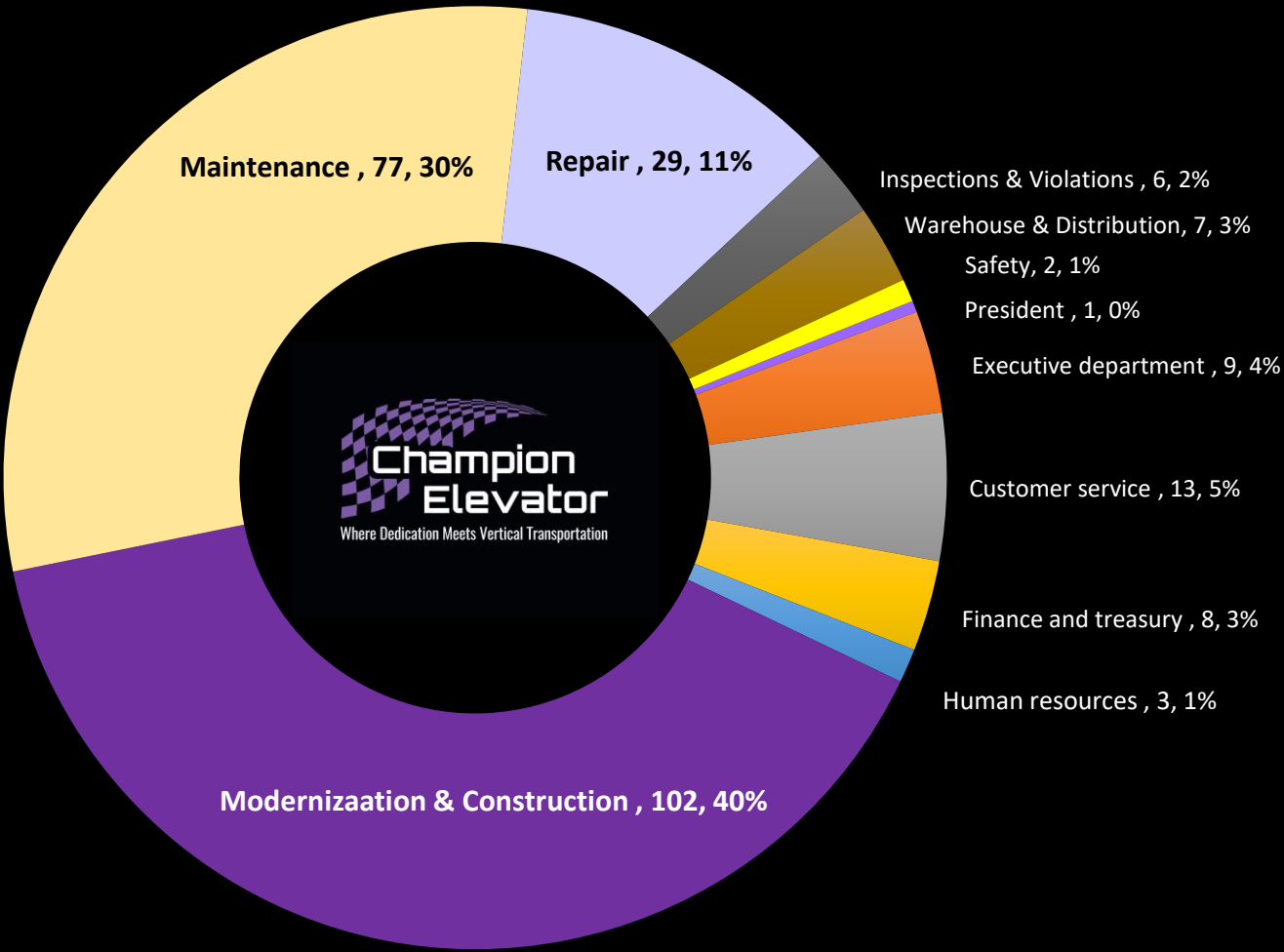


DECEMBER 2021 CHAMPION ELEVATOR 257 EMPLOYEES AT YOUR SERVICE!



- | | | | |
|----------------------------|---------------------------------|--------------------|------------------------|
| ■ President | ■ Executive department | ■ Customer service | ■ Finance and treasury |
| ■ Human resources | ■ Modernizaation & Construction | ■ Maintenance | ■ Repair |
| ■ Inspections & Violations | ■ Warehouse & Distribution | ■ Safety | |